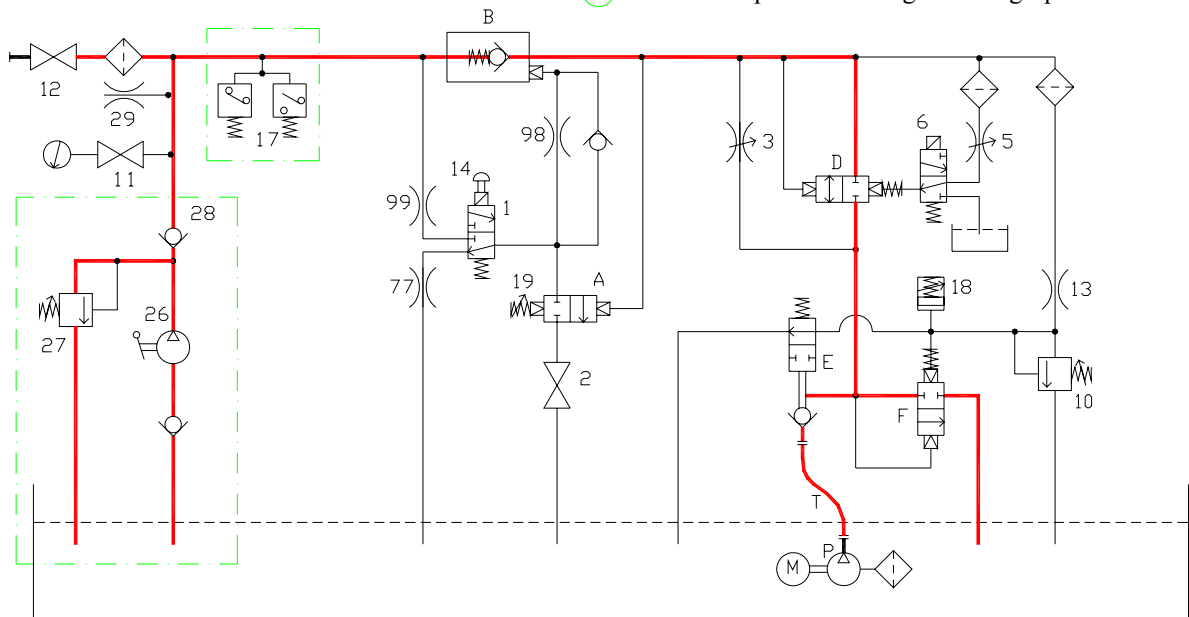


- 1 Downstroke solenoid valve
- 2 Drop test fastening
- 3 Downstroke and upward low speed adjusting screw  
- clockwise decrease (-)  
- anticlockwise increase (+)
- 5 Deceleration time adjusting screw  
- clockwise increase (+)  
- anticlockwise decrease (-)
- 6 High speed solenoid valve
- 7 High speed adjusting screw (\*)
- 10 Maximum pressure valve adjusting screw  
- clockwise increase (+)  
- anticlockwise decrease (-)
- 11 Gauge cut-out cock
- 12 Valves cut-out cock
- 13 Upward start throttle
- 14 Emergency downstroke push button
- (17) Pressure switches
- 18 Calibrate of the time upward start  
- clockwise decrease (-)  
- anticlockwise increase (+)
- 19 Calibrate downstroke speed  
- clockwise increase (+)  
- anticlockwise decrease (-)
- (26) Hand pump
- (27) Hand pump safety valve adjusting screw  
- clockwise increase (+)  
- anticlockwise decrease (-)
- (28) Hand pump non-return valve
- 29 Air bleed (hand pump)
- 77-98-99 Regulation throttle (\*)

- A Pressure regulator assembly
- B Pilot-operated non-return valve
- D Speed shift valve
- E Pump non-return distributor valve
- F Upward starting and safety valve
- M Motor
- P Pump
- T Flexible pipe

(\*) THESE ELEMENTS ARE FACTORY SET.  
ADJUSTMENT SHOULD ONLY BE  
CARRIED OUT VIA MANUFACTURE'S  
TECHNICAL SPECIFICATIONS

- h - Downward stop contact
- f - Downward starting reducing speed contact
- d - Upward stop contact
- b - Upward starting reducing speed contact



**VALVE ASSEMBLY AND DIAGRAM  
PUMP UNIT 03/E  
DIRECT EXECUTION**

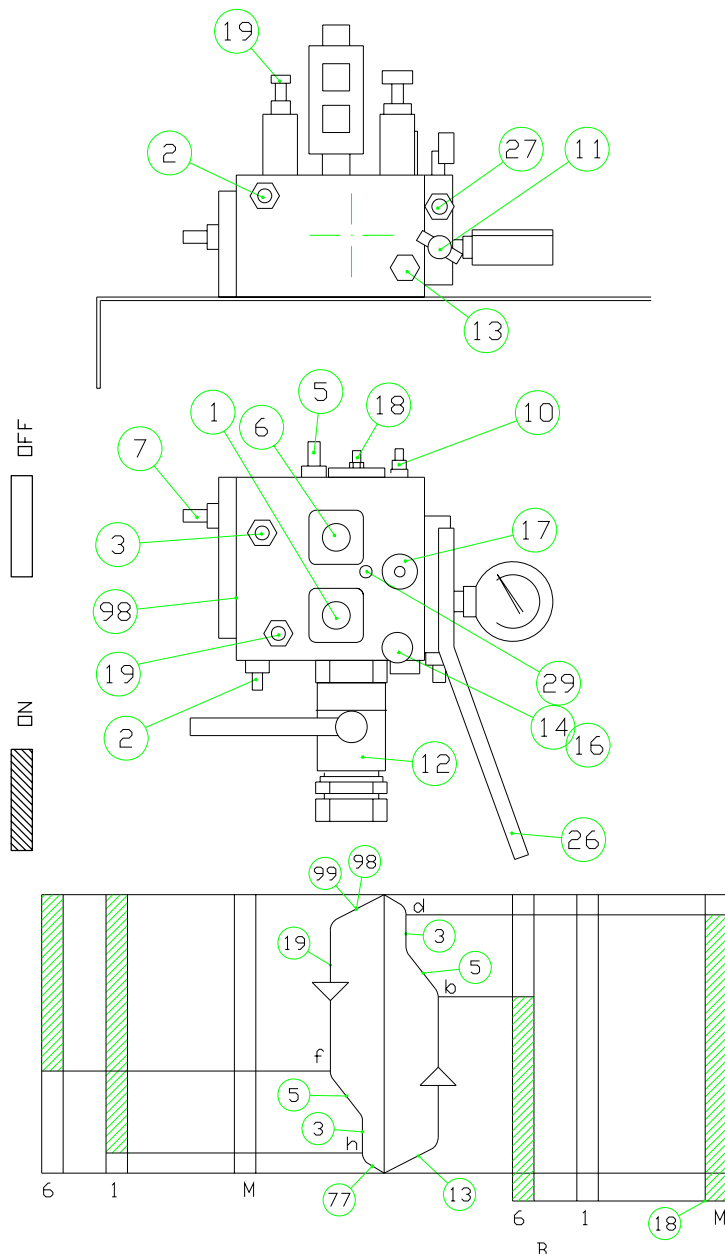


**Start Elevator**

**06 420 / G**

**rev. 0**

**1/2**

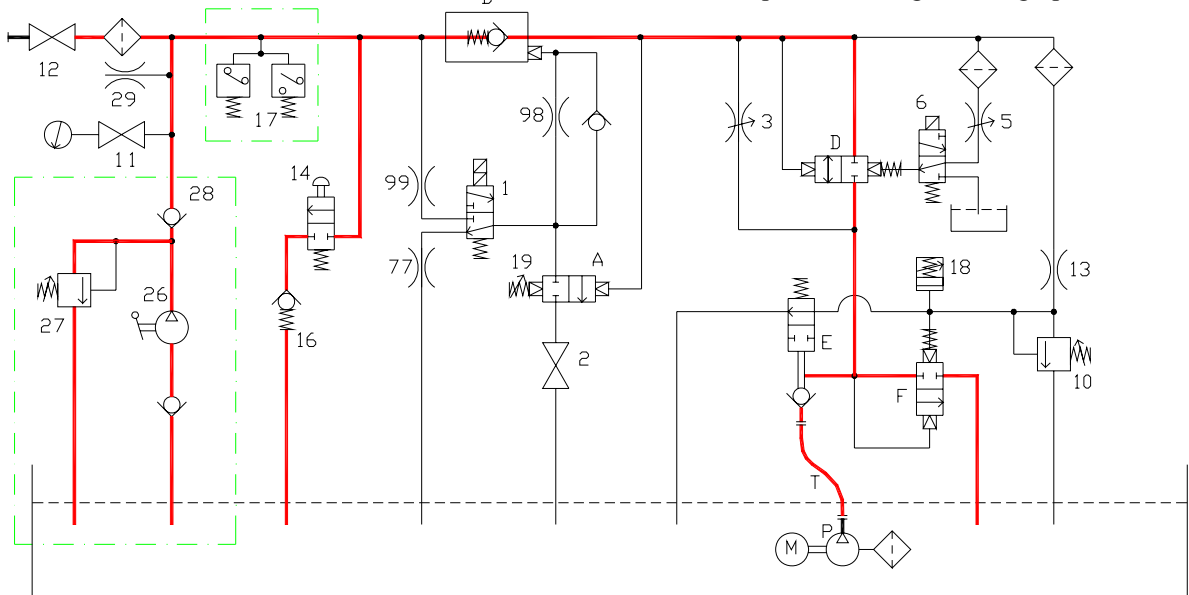


- 1 Downstroke solenoid valve
- 2 Drop test fastening
- 3 Downstroke and upward low speed adjusting screw
  - clockwise decrease (-)
  - anticlockwise increase (+)
- 5 Deceleration time adjusting screw
  - clockwise increase (+)
  - anticlockwise decrease (-)
- 6 High speed solenoid valve
- 7 High speed adjusting screw (\*)
- 10 Maximum pressure valve adjusting screw
  - clockwise increase (+)
  - anticlockwise decrease (-)
- 11 Gauge cut-out cock
- 12 Valves cut-out cock
- 13 Upward start throttle
- 14 Emergency downstroke push button
- 16 Non-return valve (against rod downstroke)
- (17) Pressure switches
- 18 Calibrate of the time upward start
  - clockwise decrease (-)
  - anticlockwise increase (+)
- 19 Calibrate downstroke speed
  - clockwise increase (+)
  - anticlockwise decrease (-)
- (26) Hand pump
- (27) Hand pump safety valve adjusting screw
  - clockwise increase (+)
  - anticlockwise decrease (-)
- (28) Hand pump non-return valve
- 29 Air bleed (hand pump)
- 77-98-99 Regulation throttle (\*)

- A Pressure regulator assembly  
 B Pilot-operated non-return valve  
 D Speed shift valve  
 E Pump non-return distributor valve  
 F Upward starting and safety valve  
 M Motor  
 P Pump  
 T Flexible pipe

(\*) THESE ELEMENTS ARE FACTORY SET.  
 ADJUSTMENT SHOULD ONLY BE  
 CARRIED OUT VIA MANUFACTURE'S  
 TECHNICAL SPECIFICATIONS

- h - Downward stop contact  
 f - Downward starting reducing speed contact  
 d - Upward stop contact  
 b - Upward starting reducing speed contact



**VALVE ASSEMBLY AND DIAGRAM  
 PUMP UNIT 03/E  
 INDIRECT EXECUTION**



**Start Elevator**

**06 420 / G**

**rev. 0**

**2/2**