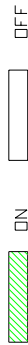
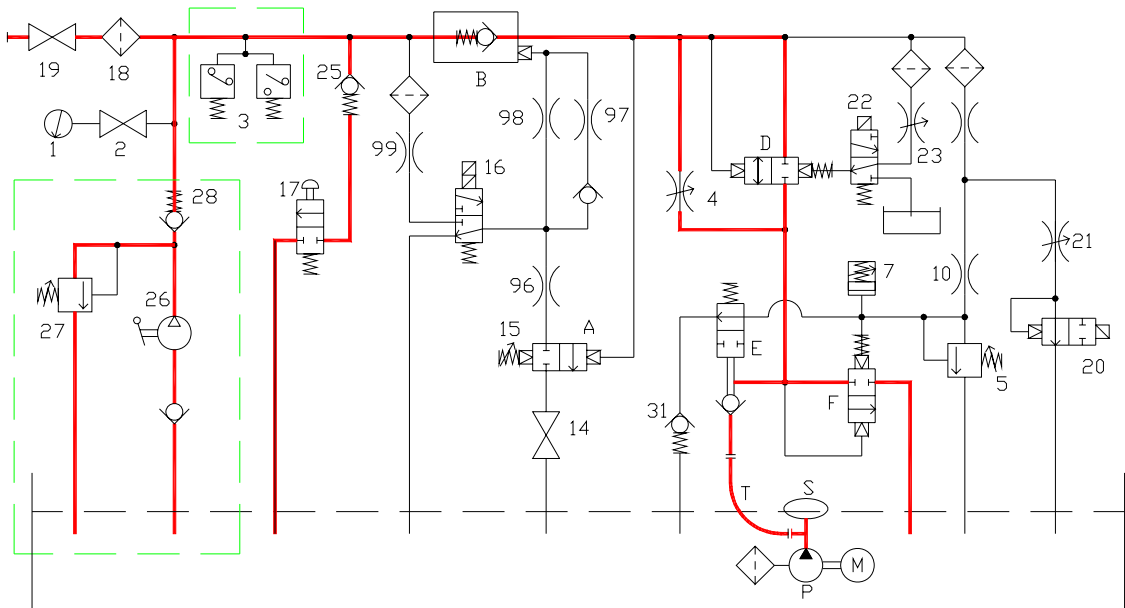


- 1 Gauge
 - 2 Gauge cut-out cock
 - 3 (Pressure switches)
 - 4 Low speed adjusting screw
- clockwise decrease (-)
- anticlockwise increase (+)
 - 5 Maximum pressure valve adjusting screw
- clockwise increase (+)
- anticlockwise decrease (-)
 - 7 Motor start time adjusting screw
- clockwise decrease (-)
- anticlockwise increase (+)
 - 10 Upward start throttle
 - 14 Test fastening screw
 - 15 Downward speed adjusting screw
- clockwise increase (+)
- anticlockwise decrease (-)
 - 16 Downstroke solenoid valve
 - 17 Emergency downstroke pushbutton
 - 18 Filter (inside the valve assembly)
 - 19 Valve cut-out cock
 - 20 Upward stop solenoid valve (Soft Stop)
 - 21 Upward stop time adjusting screw
- clockwise increase (+)
- anticlockwise decrease (-)
 - 22 Speed shift solenoid valve
 - 23 Speed shift time adjusting screw
- clockwise increase (+)
- anticlockwise decrease (-)
 - 25 Emergency downstroke minimum pressure valve
 - 26 (Hand pump)
 - 27 (Hand pump safety valve adjusting screw)
- clockwise increase (+)
- anticlockwise decrease (-)
 - 28 (Hand pump non-return valve)
 - 29 Speed shift valve arrest screw (*)
 - 30 Safety valve arrest screw (*)
 - 31 Pilot circuit check valve
 - 96-97-98-99 Throttles
 - A) Pressure regulator assembly
 - B) Pilot - operated non-return valve
 - D) Speed shift valve
 - E) Pump non-return distributor valve
 - F) Upward starting and safety valve
 - M) Motor
 - P) Pump
 - S) Pump silencer
 - T) Flexible pipe
- (*) THIS VALVE IS FACTORY SET. ADJUSTMENT SHOULD ONLY BE CARRIED OUT VIA THE MANUFACTURE'S TECHNICAL SPECIFICATIONS



- Downward stop contact
Downward starting reducing speed contact
Upward stop contact
Upward starting reducing speed contact



**VALVE ASSEMBLY AND DIAGRAM
PUMP UNIT
93/E - SL Soft Stop**



Start Elevator

04 340 / G

rev. 0

1/1