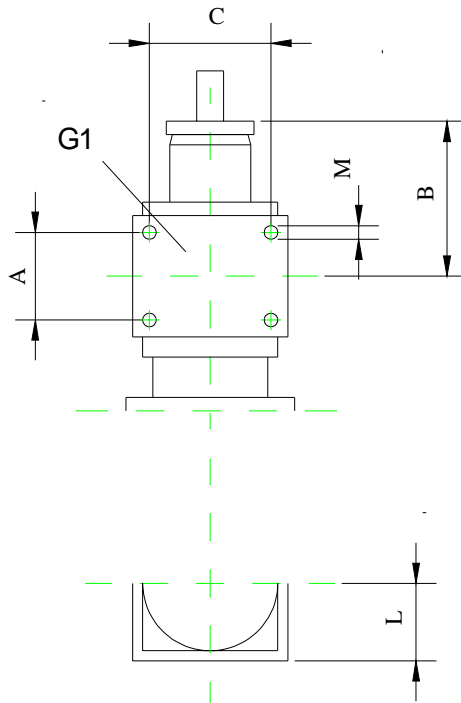


	THREE STAGES PISTONS TYPE						
	58/3	75/3	98/3	107/3	127/3	150/3	176/3
A1	60	60	60	60	60	60	80
B1	85	85	87	90	115	120	136
C1	60	70	90	100	110	130	150
M1	M10	M10	M10	M10	M10	M12	M16
L1	57	65	74	78	89	101	109
A2	60	60	60	60	80	80	80
B2	145	145	153	153	165	167	155
C2	80	100	120	130	150	180	200
M2	M10	M10	M12	M12	M16	M16	M16
L2	68	79	87	101	109	123	143



The vertical distances that regard the guiding yoke, the pit deep and the lowest parts of the car must be calculated and checked with completely closed piston.

For to move the hangers for to fix the arms, always to clockwise rotate the piston heads.



	TWO STAGES PISTONS TYPE								
	46/2	60/2	78/2	85/2	103/2	120/2	141/2	170/2	205/2
A	60	60	60	60	60	60	80	80	80
B	95	95	102	102	120	118	125	134	135
C	60	70	90	100	110	130	150	180	200
M	M10	M10	M10	M10	M10	M12	M16	M16	M16
L	57	65	74	78	89	101	109	123	143

**HANGERS FOR TO FIX
THE GUIDE ARMS
OF THE TELESCOPIC PISTONS**



Start Elevator

10 171 / G

rev. 2

1/1